

AVERY BULLGOG CAFE

MONDAY

1ST Mini Waffles, syrup or Cereal, Fruit, Juice, Milk

Chicken Quesadilla or Pizza W/K Corn, Carrot Sticks Marina Sauce, Green Salad Fruit, Juice, Milk

8TH Apple Strudel or Cereal Fruit, Juice, Milk

Chicken Fajitas or Loaded Bake Potato w/ham & cheese w/roll, Refired Beans, Peppers & Onions, Fruit, Salsa, Milk

15th Dutch Waffles or Cereal, Fruit, Juice, Milk

Tamala, Enchiladas W/K Corn, Garden Salad w/ranch dressing, Marina Sauce, Fruit, Juice, Milk

22ND Powdered Donuts Or Cereal, w/Fruit, Juice, Milk

Orange Chicken W/Fried Rice or Chicken Legs Fried Rice, Steamed Vegetable Carrot Sticks, Fruit, Juice, Milk



TUESDAY

2ND Breakfast Combo, Toast or Cereal, Fruit, Juice Milk

Chicken Legs w/roll or Ham & Cheese Sub w/chips Creamed Potatoes, Green Beans, Fruit, Juice, Milk

9TH Sausage in Pancake or Cereal, Fruit, Juice Milk

Pasta Bake w/Garlic Toast or Corny Dog, W/K Corn Green Salad w/dressing Fruit, Juice, Milk

16TH Pig in Blanket or Cereal Breakfast Bar, Fruit, Juice, Milk

Chicken Crisпитos w/cheese Sauce or Steak Fingers w/roll Blackeye Peas, Mac & Cheese Fruit, Juice, Milk, Marina Sauce

23RD Biscuit, Sausage, Gravy Or Cereal, Fruit, Juice, Milk

Cheeseburger or Chicken on Bun , Catfish, Coleslaw Bulldog Fries w/ketchup Fruit, Juice, Milk

30TH
***BREAKFAST:**
Cereal Bowl and Cereal Bars are offered as optional choices at breakfast. Students may take fruit and juice with breakfast meal.

WEDNESDAY

3RD Biscuit, Sausage, Gravy Or Cereal, Fruit, Juice, Milk

Pulled Pork on Bun Loaded Baked Potato w/roll Green Beans, Salad w/dressing Fruit, Juice, Milk

10TH Breakfast Combo, Toast or Cereal, Fruit, Juice

Steak Fingers w/roll or Chicken Nuggets w/roll Creamed Potatoes, Seamed Broccoli, Fruit, Juice, Milk

17TH Breakfast Pizza or Cereal, Juice, Fruit, Milk

Salisbury Steak w/roll or Pop Corn Chicken w/roll w/roll, Creamed Potatoes, Steamed Broccoli, Fruit, Juice

24TH Mini Waffles, syrup or Cereal, Fruit, Juice, Milk

Pizza or Turkey & Cheese Sub W/K Corn, Carrot Sticks Marina Sauce, Green Salad Fruit, Juice, Milk

31ST
***LUNCH**
Turkey & Cheese Sandwich are served daily as an optional entrée choice.
***Students may choose up to 2 choices of Fruit or Juice each day at lunch.**

THURSDAY

4TH Extravaganza. Toast or Cereal Fruit, Juice, Milk

Hamburger or Chicken on Bun Baked Beans, Salad Fixings Oven Fries, ketchup Fruit, Milk, Juice

11TH Donut Holes, Powdered Donut or Cereal, Fruit, Juice Milk

Pull Pork on Bun Or Loaded Baked Potato w/roll Green Salad, Carrot Sticks Fruit, Juice, Milk

18TH Egg Extravaganza, Toast Or Cereal, Fruit, Juice, Milk

Super Nacho's or Loaded Baked Potato, Pinto Beans Green Salad w/Ranch Dressing Marina Sauce, Fruit, Milk

25TH Apple Strudel, Cereal Fruit, Juice, Milk

Turkey & Ham Hoagie or Peanut Butter & Jelly, Carrots, Cereal Fruit, Juice, Milk
Early Release 12:00

***Lunch: Students may choose one main entrée**



TEXAS DEPARTMENT OF AGRICULTURE
COMMISSIONER SID MILLER

This product was funded by USDA.
This institution is an equal opportunity provider.

Food and Nutrition Division
National School Lunch Program

FRIDAY

5TH Sausage, Biscuit, Gravy Or Cereal, w/Fruit, Juice, Milk

Super Nacho's or Corny Dog, Pinto Beans Green Salad w/Ranch Dressing Marina Sauce, Fruit, Milk

12TH Biscuit, Sausage, Gravy Or Cereal, Fruit, Juice, Milk

Cheeseburger or Chicken on Bun , Catfish, Coleslaw Bulldog Fries w/ketchup Fruit, Juice, Milk

19TH Biscuit, Sausage, Gravy Or Cereal, Fruit, Juice, Milk

Cheeseburger or Chicken on Bun , Catfish, Coleslaw Bulldog Fries w/ketchup Fruit, Juice, Milk

26TH

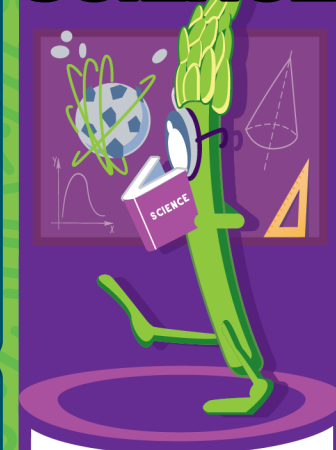


Graduation

MAY

MENU 2023

GEAR UP FOR SCIENCE



ANNOUNCEMENTS:

- 5/02 3rd, 4th & 5th MATH STARR Test
- 5/04 Kindergarten Moving Up Celebration, PK Fun Day
- 5/05 Elementary Fun Day
- 5/11 4th Grade Field Trip
- 5/15 PK-2nd Grade Field Day
- 5/12 Sr Breakfast
- 5/12 Sr. Pep Rally 3:10
- 5/15 PK - 2nd Field Day
- 5/16 3rd - 5th Grade Field Day
- 5/19 8th Grade Field Trip
- 5/23 Elementary Awards
- 5/23 Middle School Field Trip
- 5/24 Middle School Field Trip
- 5/25 Last Day of School
Early Release @ 12:00
- 5/25 End of the Third 9 Weeks
Final Report Card, View through Parent Portal
- A hard copy will be sent home



Updated 5/1/2023
www.SquareMeals.org